

USER- MANUAL Tamcom



ISO 9001 : 2015
NL/PRO 238239125

Van 't Hoffstraat 12
2665 JL Bleiswijk, The Netherlands
T. 31 (0) 10 522 43 73
Tamcom man.docx Rev. 2.5 UK0125

Tamson Instruments bv

E-mail: sales@tamson.nl
Website: www.tamson.com

VAT: NL 80 66 34 984 B01
Bank account no.:
NL28 INGB 0007 350 370
NL95 RABO 0160100046
Chamber of commerce 27 16 95 41

1	SAFETY AND WARNINGS	3
2	WARRANTY	3
3	SOFTWARE INSTALLATION	4
4	RUNNING THE SOFTWARE.....	6
4.1	DISPLAY A SESSION.....	6
4.2	ZOOMING DATA.....	7
4.3	LIBRARY	8
5	LOGGING LIVE DATA	8
6	SETTINGS	9
7	EXPORTING DATA AS CSV.....	10
8	DISCLAIMER.....	11



ISO 9001 : 2015
NL/PRO 238239125

Van 't Hoffstraat 12
 2665 JL Bleiswijk, The Netherlands
 T. 31 (0) 10 522 43 73
 Tamcom man.docx Rev. 2.5 UK0125

Tamson Instruments bv

E-mail: sales@tamson.nl
 Website: www.tamson.com

VAT: NL 80 66 34 984 B01
 Bank account no.:
 NL28 INGB 0007 350 370
 NL95 RABO 0160100046
 Chamber of commerce 27 16 95 41

1 SAFETY AND WARNINGS

Make sure before installing or operating the equipment to read and understand all instructions and safety precautions listed in this manual. If there are any questions concerning the operation of the equipment or about the information given in this manual please contact your local dealer or our sales department first.

Performance of installation, operation, or maintenance other than those described in this manual may result in a hazardous situation and may void the manufacturer's warranty.

Never operate equipment that is not correctly installed. Unqualified personnel must not operate the equipment. Avoid damage to the equipment, or its accessories, caused by incorrect operation.

Important:

- When performing service, maintenance or moving the apparatus, always disconnect the apparatus at the main's socket,
- Proper skilled and trained personnel are only allowed to operate this equipment,
- Take notice of warning labels and never remove them,
- Refer service and repairs to qualified technician,
- If a problem persists, call your supplier or Tamson Instruments bv.

2 WARRANTY

Tamson Instruments bv. warrants that all their manufactured equipment is free from defects in material and workmanship, preventing the machine from normal operation. Tamson Instruments bv does not warranty that the equipment is fit for any other use than stated in this manual. The manufacturer can only be held responsible for the security, reliability and performance of the equipment, when operated in accordance with the operating instructions, extensions, adjustments, changes and/or if repair is performed by Tamson Instruments bv. or authorized persons only. This warranty is limited to one year from the date of invoicing. All equipment and materials are subject to standard production tolerances and variations.



ISO 9001 : 2015
NL/PRO 238239125

Van 't Hoffstraat 12
2665 JL Bleiswijk, The Netherlands
T. 31 (0) 10 522 43 73
Tamcom man.docx Rev. 2.5 UK0125

Tamson Instruments bv


E-mail: sales@tamson.nl
Website: www.tamson.com

VAT: NL 80 66 34 984 B01
Bank account no.:
NL28 INGB 0007 350 370
NL95 RABO 0160100046
Chamber of commerce 27 16 95 41



3 Software installation

Before installing, remove any older version

Unzip the software

 Tamcom.zip

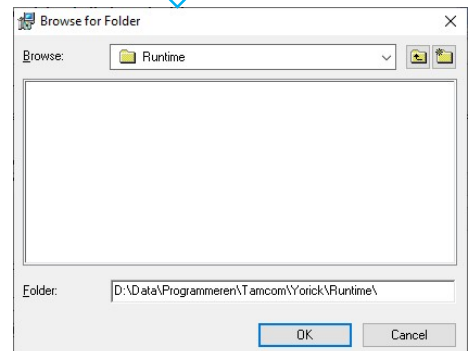
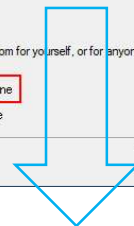
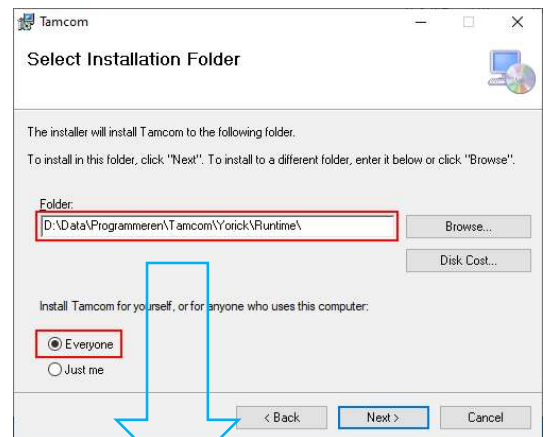
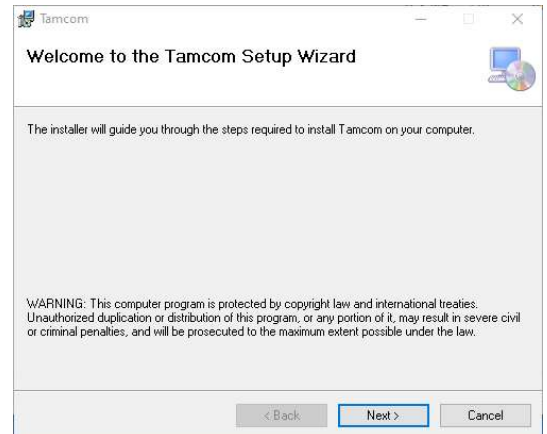
Two files will be visible

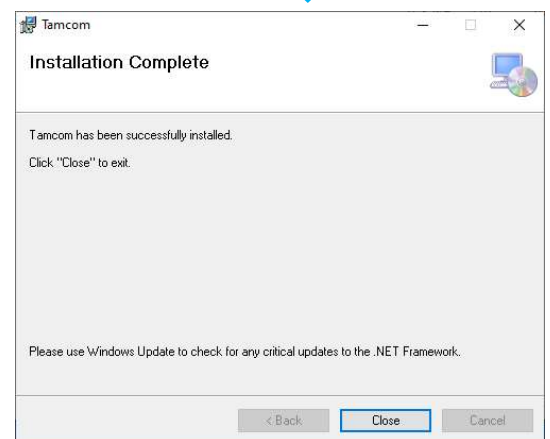
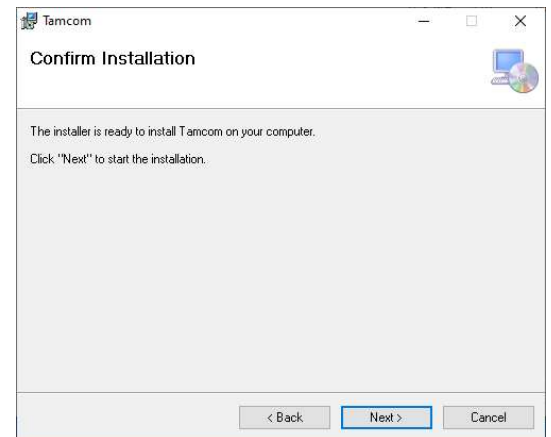
 Installer.msi
 setup.exe

Sometimes anti virus software removes the “setup.exe” as it is seen as untrusted and thus a threat. See your antivirus software on how to undo this problem\

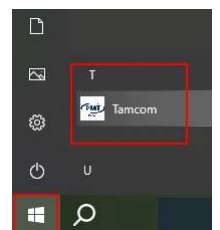
Start installing by double clicking the “setup.exe”

Follow the screens



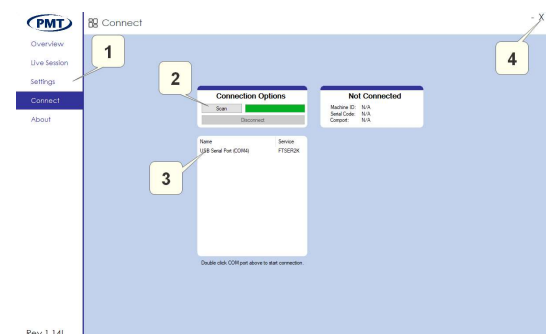


After finishing the installation, TAMCOM will be visible from the start menu



Double click to start Tamcom

Connecting	
Item	Description
1	Pages
2	Scan for connected devices
3	Devices found
4	Close software





4 Running the software


Connect a thermometer and make sure the baudrate item on the thermometer is set to 57600


Press “Scan”, the device will be found, but is not yet connected

Name	Service
USB Serial Port (COM4)	FTSER2K
USB Serial Port (COM5)	FTSER2K

 Attempting connection to COM5.

 Requesting serial id...

 Requesting serial id...

 Requesting machine id...

 Successfully connected to TT3 . (COM5)

To connect the thermometer double click on the

“USB Serial Port (COM5)”

This can take up to a few seconds

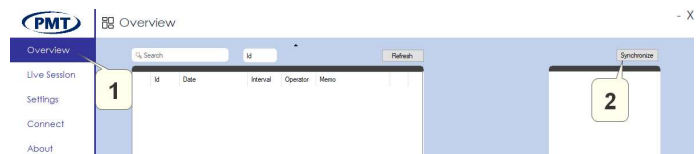
During the connecting messages will be displayed at the side of the screen

Specific info is displayed in the screen

Now you can select the overview window [1]
And synchronize the thermometer [2]

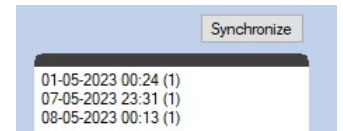
Connected

Machine ID: TT3
Serial Code: 51CC06
Comport: COM5



This will do 2 things:

- The thermometers date and time will be synchronized
- It will display the measurements sessions stored [max 16]



In this menu 3 stored measurements are displayed

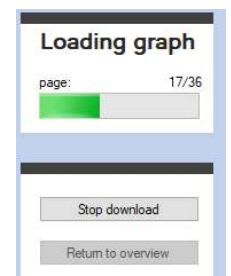
4.1 Display a session

When a session is selected, the data will be retrieved from the thermometer.

During the loading of the stored data a bar will be displayed.

The download can be stopped (data is secured).

Depending on the duration of the logging, the time to retrieve the data can take up several minutes.



ISO 9001 : 2015
NL/PRO 238239125

Van 't Hoffstraat 12
2665 JL Bleiswijk, The Netherlands
T. 31 (0) 10 522 43 73
Tamcom man.docx Rev. 2.5 UK0125

Tamson Instruments bv

E-mail: sales@tamson.nl
Website: www.tamson.com

VAT: NL 80 66 34 984 B01
Bank account no.:
NL28 INGB 0007 350 370
NL95 RABO 0160100046
Chamber of commerce 27 16 95 41

Displaying a graph	
Item	Description
1	Y-Axis
2	Graph
3	Max temperature
4	Min temperature
5	X-Axis
6	Zoom graph start
7	Zoom graph end

4.2 Zooming data

Use your mouse to zoom the graph

Select the start [1]

Select the end [2]

Use [CTRL] and mouse to move this zoom window [3]

The data of the window is displayed under the graph

- The values of the session
- The values of the zoomed part of the graph

General data also is displayed

The operator list will be available when filled

Filling can be done in menu "settings"

The zoom window also comes with a pre-set

A window can be set to:

- 30 sec,
- 1 min,
- 10 min,
- 30 min,
- 60 min

The data can be exported as

CSV, Excel, PNG, JPG, PDF, Print, SQL

Print will send a screen dump to the printer

When selecting "export", a menu will open:

Choose a map,

or

in case of the "Print" option choose from any connected printer

The memo field offers comment text to store with the session.

Additional text can be combined with the specific graph and stored.



Graph Total		Graph Zoomed	
Min	20,843	Min	20,868
Max	20,914	Max	20,891
Avg	20,888	Avg	20,880
Delta	00,072	Delta	00,023
stDev	00,020	stDev	00,007



Graph Information	
07-05-2023 23:31:01	
Interval (sec)	1
Operator	
Machine ID	TT3
Serial Code	51CC06

CSV	Export
10 min	Reset
Undo	
Save Session	
Back to Overview	



ISO 9001 : 2015
NL/PRO 238239125

Van 't Hoffstraat 12
2665 JL Bleiswijk, The Netherlands
T. 31 (0) 10 522 43 73
Tamcom man.docx Rev. 2.5 UK0125

Tamson Instruments bv

E-mail: sales@tamson.nl
Website: www.tamson.com

VAT: NL 80 66 34 984 B01
Bank account no.:
NL28 INGB 0007 350 370
NL95 RABO 0160100046
Chamber of commerce 27 16 95 41

“Save Session” or skip using “back to overview”.

4.3 Library

When a session is saved it will be stored in the database

When a session is saved it will be stored in the database

The data can be selected by clicking on the “eye” symbol:



Data can be organized on Id, Date, etc.
Click on the header of the column to organize

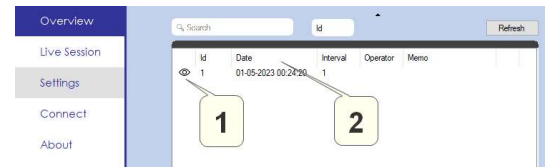
The data is stored in an SQL database

The file is named “Tamson.db”

One can copy this file to secure all data in another Map
or on another network or device

The “Tamson.db” can be overwritten in the map where
the program is situated to restore

This is the map chosen during installation.



5 Logging live data

When the Thermometer is connected also live data can
be logged.

All functionality of the logged data will be usable here.

When connected, start the acquisition using the button

“start Session

Start Session

Stop a running session hitting the same key, now
showing “Stop Session”

Once stopped, save or discard the data

Save/Discard



ISO 9001 : 2015
NL/PRO 238239125

Van 't Hoffstraat 12
2665 JL Bleiswijk, The Netherlands
T. 31 (0) 10 522 43 73
Tamcom man.docx Rev. 2.5 UK0125

Tamson Instruments bv

E-mail: sales@tamson.nl
Website: www.tamson.com

VAT: NL 80 66 34 984 B01
Bank account no.:
NL28 INGB 0007 350 370
NL95 RABO 0160100046
Chamber of commerce 27 16 95 41

6 Settings

To open you have to use a password.

5662

The password can be altered, however 5662 will always work

The menu “settings” offers following possibilities

Overview

Live Session

Settings

Connect

About

Password Protection

Password

Displaying a graph	
Item	Description
1	Export / Importing database <ul style="list-style-type: none"> - CSV - EXCEL - SQL
2	Notifications right side of screen
3	Temp unit and interval (live session)
4	Company name / enable-disable
5	Confirm changes / password
6	Make list of operators

The screenshot shows the 'Settings' menu with various options. Numbered callouts point to specific features:

- 1**: Points to the 'Export Database' button in the 'EXCEL' section.
- 2**: Points to the 'Import Database' button in the 'Import Database' section.
- 3**: Points to the 'Temperature unit' dropdown menu.
- 4**: Points to the 'Factory Settings' button.
- 5**: Points to the 'Submit Changes' button in the 'Settings Changes' section.
- 6**: Points to the 'Add' button in the 'Operators' section.

7 Exporting Data as CSV

A graph can be exported to numerical values.
This way additional data processing can be done in i.e. Excel.

Note that the exported data are the full graph, not the zoomed part

The CSV file is Excel compatible and contains two tabs



In the Sheet "Overview" machine data is displayed
In the sheet temp_LZXIsv the sampled data can be found

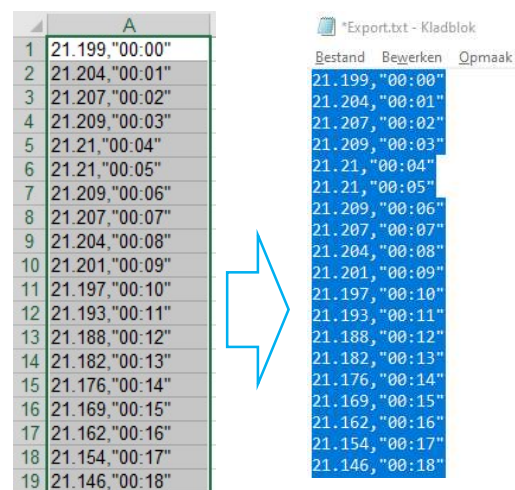
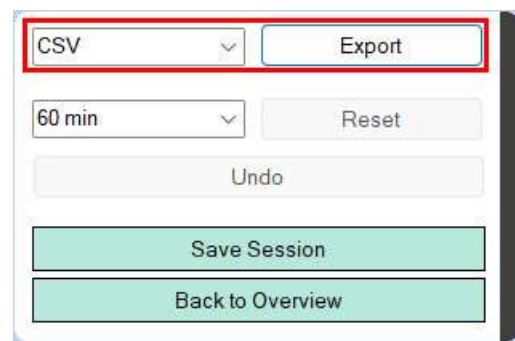
Data is stored as
xx.xxx,"00:00"

Sometimes one wants data separated and a comma as delimiter

Handle as follows using notepad

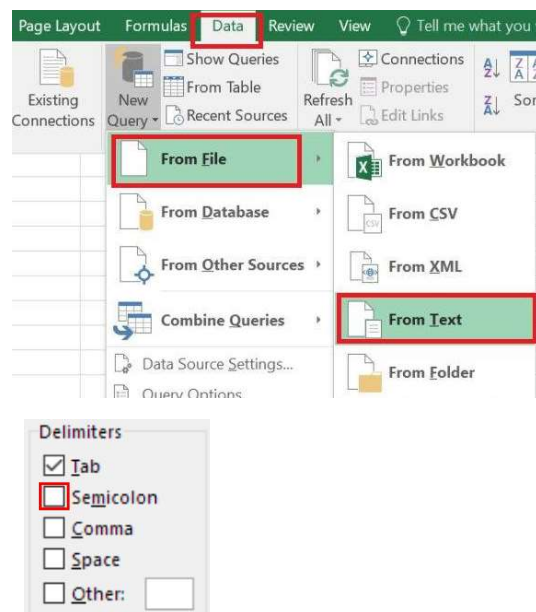
Select the column in Excel
Copy [Ctrl – V]

Copy in Notepad
[Ctrl – C]



In Notepad us find – replace [Ctrl – H]
First replace the comma “,” with a semicolon “;”
Than replace the point with a comma
Save as a text file i.e. TT3-01.txt

Re-import the data in Excel using
Data Import from Text



Select the text file you saved in Notepad. In our example
“TT3-01.txt”
Import

Delimited, next
Add a semicolon as a delimiter, next and finish
Use the suggested origin (=\$A\$1), OK

Your data is now separated between Value and Time
Select row "A" and format [Ctrl + 1] the cell to a 3 digit number

8 DISCLAIMER

Information given herein is offered in good faith as accurate, but without guarantee. Conditions of use and suitability of the product for particular uses are beyond our control; all risks of use of the product are therefore assumed by the user.

We expressly disclaim all warranties of every kind and nature, including warranties of merchantability and fitness for a particular purpose in respect to the use or suitability of the product.

Nothing is intended as a recommendation for uses which infringe valid patents or as extending license under valid patents. Appropriate warnings and safe handling procedures should be provided to handlers and users. Alteration of this document is strictly prohibited. Except to the extent required by law, republication or retransmission of this document, in whole or in part, is not permitted. Tamson Instruments bv assume no responsibility for accuracy of information. Tamson Instruments neither represent nor warrant that the format, content or product formulas contained in this document comply with the laws of any other country except the Netherlands.

Tamson Instruments bv, All rights reserved.

Format Cells

Number	Alignment
Category:	
General	
Number	
Currency	
Accounting	



ISO 9001 : 2015
NL/PRO 238239125

Van 't Hoffstraat 12
2665 JL Bleiswijk, The Netherlands
T. 31 (0) 10 522 43 73
Tamcom man.docx Rev. 2.5 UK0125

Tamson Instruments bv

E-mail: sales@tamson.nl
Website: www.tamson.com

VAT: NL 80 66 34 984 B01
Bank account no.:
NL28 INGB 0007 350 370
NL95 RABO 0160100046
Chamber of commerce 27 16 95 41