



est. 1878

# TFBT Data Base



ISO 9001 : 2015  
NL/PRO 238239125

Van 't Hoffstraat 12  
2665 JL Bleiswijk, The Netherlands  
T. 31 (0) 10 522 43 73  
TFBT Database Software 02/21 UK Rev S1.22

## Tamson Instruments bv

E-mail: [sales@tamson.com](mailto:sales@tamson.com)  
Website: [www.tamson.com](http://www.tamson.com)

VAT: NL 80 66 34 984 B01  
Bank account no.:  
NL28 INGB 0007 350 370  
NL95 RABO 0160100046  
Chamber of commerce 27 16 95 41

Page 1/24



est. 1878

## CONTENT

<b>1</b>	<b>SAFETY AND WARNINGS</b> .....	<b>3</b>
<b>2</b>	<b>WARRANTY</b> .....	<b>3</b>
<b>3</b>	<b>PRECAUTIONS AND HAZARDS</b> .....	<b>4</b>
<b>4</b>	<b>INSTALLATION AND REMOVAL</b> .....	<b>4</b>
4.1	IMPORTANT .....	4
<b>5</b>	<b>TFBT SOFTWARE</b> .....	<b>5</b>
5.1	INSTALLING THE SOFTWARE .....	5
5.2	RUN THE SOFTWARE .....	6
5.3	CLOSE PROGRAM.....	6
5.4	REMOVING THE SOFTWARE .....	7
5.5	RESTORE A BACKUP FILE .....	9
<b>6</b>	<b>GENERAL OVERVIEW</b> .....	<b>10</b>
<b>7</b>	<b>START THE PROGRAM</b> .....	<b>11</b>
7.1	RESTART .....	11
7.2	CHECK COMMUNICATION.....	12
<b>8</b>	<b>MAIN FUNCTIONS</b> .....	<b>13</b>
<b>9</b>	<b>CONNECTING TO THE TFBT APPARATUS</b> .....	<b>15</b>
<b>10</b>	<b>DATABASE</b> .....	<b>16</b>
10.1	ADVANCED SEARCH METHOD 1 .....	16
10.2	ADDING A RECORD MANUALLY .....	18
10.3	QUICK SEARCH METHOD.....	19
<b>11</b>	<b>EXPORT DATA</b> .....	<b>20</b>
11.1	GRAPHICAL FORMAT .....	20
11.2	NUMERICAL OUTPUT.....	20
11.3	HARDCOPY .....	20
11.4	GENERAL EXPORT SETTINGS .....	20
<b>12</b>	<b>OPENING THE DATABASE AND PROCESSING BY THIRD PARTY SOFTWARE</b> .....	<b>20</b>
<b>13</b>	<b>SETTINGS</b> .....	<b>21</b>
<b>14</b>	<b>TROUBLESHOOT</b> .....	<b>22</b>
14.1	SERIAL PORT CAN'T BE FOUND.....	22
14.2	RECORDS CAN'T BE DELETED .....	22
14.3	PRESSURE DISPLAYED AS KPA AND MBar NEEDED OR VICE VERSA .....	22
14.4	PASSWORD FORGOTTEN.....	22
14.5	MEASUREMENT DATA HAS DISAPPEARED .....	22
<b>15</b>	<b>OUTPUT FORMAT</b> .....	<b>23</b>
<b>16</b>	<b>DISCLAIMER</b> .....	<b>24</b>



ISO 9001 : 2015  
NL/PRO 238239125

Van 't Hoffstraat 12  
2665 JL Bleiswijk, The Netherlands  
T. 31 (0) 10 522 43 73  
TFBT Database Software 02/21 UK Rev S1.22

# Tamson Instruments bv

E-mail: [sales@tamson.com](mailto:sales@tamson.com)  
Website: [www.tamson.com](http://www.tamson.com)

VAT: NL 80 66 34 984 B01  
Bank account no.:  
NL28 INGB 0007 350 370  
NL95 RABO 0160100046  
Chamber of commerce 27 16 95 41



est. 1878

## 1 SAFETY AND WARNINGS

Make sure before installing or operating the equipment to read and understand all instructions and safety precautions listed in this manual. If there are any questions concerning the operation of the equipment or about the information given in this manual please contact your local dealer or our sales department first.

Performance of installation, operation, or maintenance other than those described in this manual may result in a hazardous situation and may void the manufacturer's warranty.

Never operate equipment that is not correctly installed. Unqualified personnel must not operate the equipment. Avoid damage to the equipment, or its accessories, caused by incorrect operation.

Important:

- When performing service, maintenance or moving the apparatus, always disconnect the apparatus at the main's socket,
- Proper skilled and trained personnel are only allowed to operate this equipment,
- Take notice of warning labels and never remove them,
- Refer service and repairs to qualified technician,
- If a problem persists, call your supplier or Tamson Instruments bv.

## 2 WARRANTY

Tamson Instruments bv. warrants that all their manufactured equipment is free from defects in material and workmanship, preventing the machine from normal operation. Tamson Instruments bv does not warranty that the equipment is fit for any other use than stated in this manual. The manufacturer can only be held responsible for the security, reliability and performance of the equipment, when operated in accordance with the operating instructions, extensions, adjustments, changes and/or if repair is performed by Tamson Instruments bv. or authorized persons only. This warranty is limited to one year from the date of invoicing. All equipment and materials are subject to standard production tolerances and variations.



ISO 9001 : 2015  
NL/PRO 238239125

Van 't Hoffstraat 12  
2665 JL Bleiswijk, The Netherlands  
T. 31 (0) 10 522 43 73

TFBT Database Software 02/21 UK Rev S1.22

**Tamson Instruments bv**

E-mail: [sales@tamson.com](mailto:sales@tamson.com)  
Website: [www.tamson.com](http://www.tamson.com)

VAT: NL 80 66 34 984 B01  
Bank account no.:  
NL28 INGB 0007 350 370  
NL95 RABO 0160100046  
Chamber of commerce 27 16 95 41

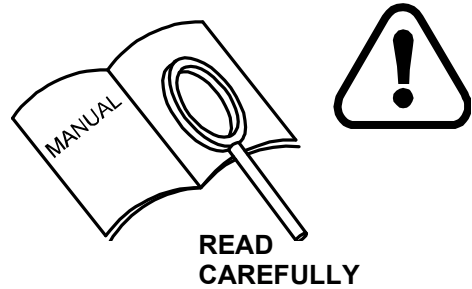
Page 3/24

### 3 PRECAUTIONS AND HAZARDS

Before attempting to operate the product read all parts of this manual carefully to insure smooth operation and avoid damage to the equipment, its accessories or data collected.

If a malfunction occurs, consult section "Troubleshoot", page 22 **Fout! Bladwijzer niet gedefinieerd.** at the end of this manual.

If problem persists, call your supplier or Tamson Instruments bv. Never operate the equipment if not correctly installed. The equipment must be operated only by qualified personnel. Avoid damage to the equipment or its accessories through incorrect operation.



### 4 INSTALLATION and REMOVAL

#### 4.1 Important

Tamson Instruments bv is not responsible for any consequential damage or harm caused by using this software. Installation must be done by a well trained and authorized person.



ISO 9001 : 2015  
NL/PRO 238239125

Van 't Hoffstraat 12  
2665 JL Bleiswijk, The Netherlands  
T. 31 (0) 10 522 43 73

TFBT Database Software 02/21 UK Rev S1.22

**Tamson Instruments bv**

E-mail: sales@tamson.com  
Website: www.tamson.com

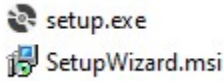
VAT: NL 80 66 34 984 B01  
Bank account no.:  
NL28 INGB 0007 350 370  
NL95 RABO 0160100046  
Chamber of commerce 27 16 95 41

## 5 TFBT Software

### 5.1 Installing the software

To installing the program you need the installation program setup.exe and Setup.Wizard.msi

To install, double click the "setup.exe" file



Make sure you have administrator rights.

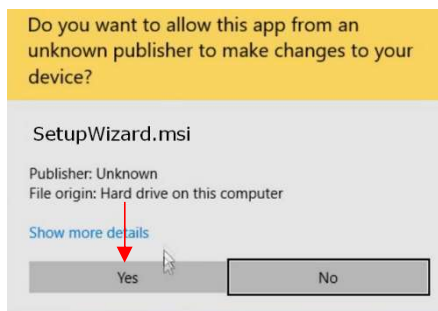
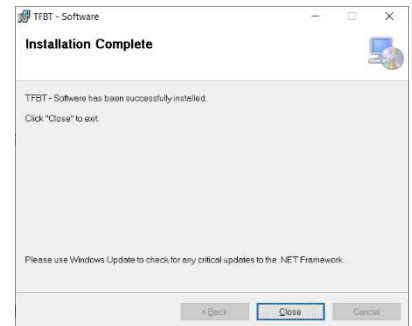
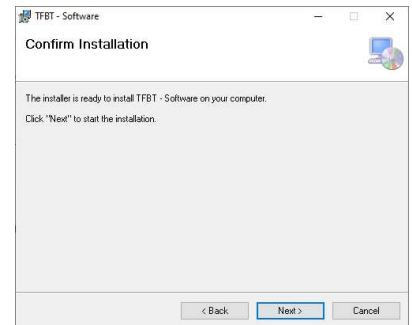
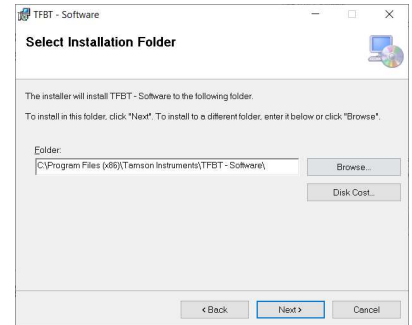
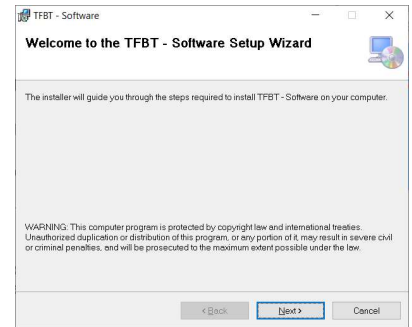
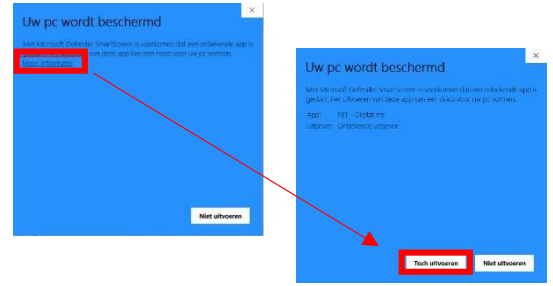
(If not right click and select run as administrator)

Choose the "more information" instead of skipping

Select the installation folder  
 \Program Files (x86)\

Confirm the installation (yes)  
 Accept the windows 10 message

Finally installation is complete  
 Press close



ISO 9001 : 2015  
 NL/PRO 238239125

Van 't Hoffstraat 12  
 2665 JL Bleiswijk, The Netherlands  
 T. 31 (0) 10 522 43 73  
 TFBT Database Software 02/21 UK Rev S1.22

**Tamson Instruments bv**

E-mail: sales@tamson.com  
 Website: www.tamson.com

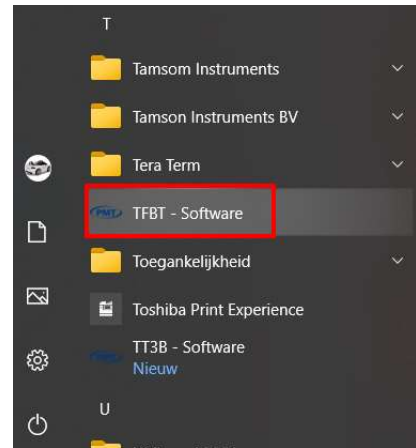
VAT: NL 80 66 34 984 B01  
 Bank account no.:  
 NL28 INGB 0007 350 370  
 NL95 RABO 0160100046  
 Chamber of commerce 27 16 95 41

## 5.2 Run the software

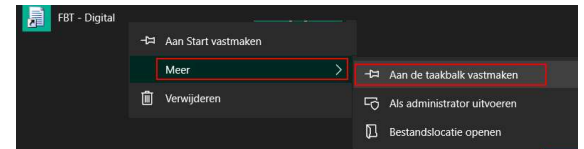
The program file can be found as "FBT - Digital"

Program files are placed here:

:\Program Files (x86)\FBT - Digital



To place the program on your desk or task bar, right-click the icon

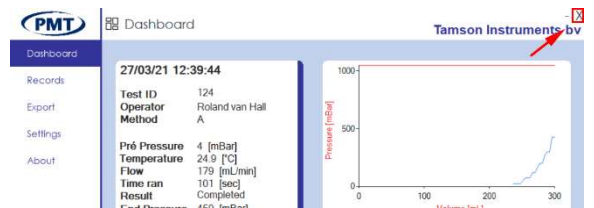


## 5.3 Close program

To close down use the "X" in the top right corner

The latest measurement is stored in the database  
When restart, a backup of the database will be made

For backup settings see "Restore a backup file", page 9



## 5.4 Removing the software

**Before removing the software, make sure you backup the datafile**

Use the configuration screen to remove the program.

Use Category view, select "Programms" followed by "Programs and Features".

Now select the program :

TFBT - Software	Tamson Instruments	27-3-2021	16,2 MB	1.20
-----------------	--------------------	-----------	---------	------

Right-click and chose for deïnstallation

The software consists of two pieces:

- Program
- Data and export files

When removing using the configuration screen, the programfiles and its map are completely removed.

```
X:\ProgramFiles(86)\Tamson Instruments\TFBT-Software
```

The database is stored separately and also will be removed when deïnstalling the software.

**Make sure you backup the datafile before removing the software**

```
X:\users\xxxx*\AppData\Roaming\TFBT-Software\database\Tamson.db**
```

However when uninstalling, backup data is **not being removed** and can be found here:

```
X:\Users\xxxx*\AppData\Roaming\TFBT - Software\backup**
```

All data exported to this is map will stay there and is not removed in case of an uninstall.

```
X:\Users\xxxx*\AppData\Roaming\TFBT - Software\backup**
```

To completely remove all data, the map "**TFBT - Software**" and its sub maps have to be manually removed

```
X:\Users\xxxx*\AppData\Roaming\TFBT - Software**
```

In case of accidental removal of the program please see "Restore a backup file" page 9



ISO 9001 : 2015  
NL/PRO 238239125



est. 1878

A backupfile of the previous session can be found here\*\*

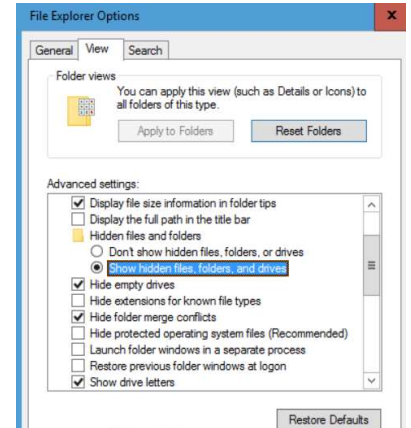
X:\Users\rhall\AppData\Roaming\TFBT - Software\backup

The file is time stamped

Backup-27mrt2021-1027-Tamson.db

\* the "xxxx" stands for the user

\*\* This softwarepath normally is hidden and only becomes available whith the option "Show hidden files, folders and drivers" selected. You find this menu in the windows control panel, file explorer options, tab "view"



ISO 9001 : 2015  
NL/PRO 238239125

Van 't Hoffstraat 12  
2665 JL Bleiswijk, The Netherlands  
T. 31 (0) 10 522 43 73  
TFBT Database Software 02/21 UK Rev S1.22

**Tamson Instruments bv**

E-mail: sales@tamson.com  
Website: www.tamson.com

VAT: NL 80 66 34 984 B01  
Bank account no.:  
NL28 INGB 0007 350 370  
NL95 RABO 0160100046  
Chamber of commerce 27 16 95 41

Page 8/24



## 5.5 Restore a backup file

Everytime after closing the software, a backup file is generated holding all records. Backup files are stored here:

```
X:\Users\rhall\AppData\Roaming\TFBT - Software\backup
```

There are two options for storing a backup:

- A new file can be stored  
Filename will be timestamped  
Backup-27mrt2021-1336-Tamson.db
- Overwrite the existing backup-file  
Fixed filename "Backup-Tamson.db"

This option can be set under the menu "Settings"

Select the latest backupfile i.e.

```
Backup-27mrt2021-1027-Tamson.db
```

Rename the file to "Tamson.db"

Copy or overwrite the existing database file here

```
X:\users\xxxx*\AppData\Roaming\TFBT-Software\database\Tamson.db
```

\* the "xxxx" stands for the user



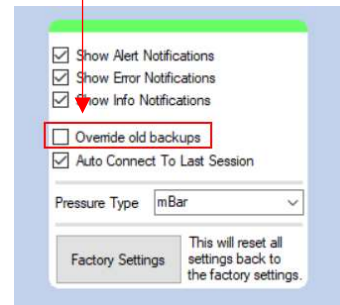
Dashboard

Records

Export

Settings

About



ISO 9001 : 2015  
NL/PRO 238239125

Van 't Hoffstraat 12  
2665 JL Bleiswijk, The Netherlands  
T. 31 (0) 10 522 43 73  
TFBT Database Software 02/21 UK Rev S1.22

**Tamson Instruments bv**

E-mail: sales@tamson.com  
Website: www.tamson.com

VAT: NL 80 66 34 984 B01  
Bank account no.:  
NL28 INGB 0007 350 370  
NL95 RABO 0160100046  
Chamber of commerce 27 16 95 41

## 6 General overview

This software captures the FBT output.

On the FBT via the settings one can choose whether or not to use the ticket printer

Additional to the ticket printer measurement data is sent to the USB port on which you can connect a separate computer to collect the measurement data

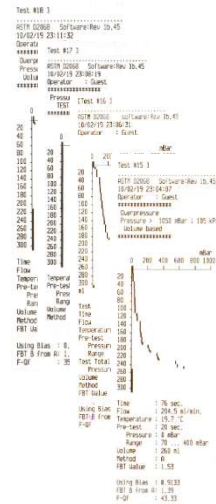
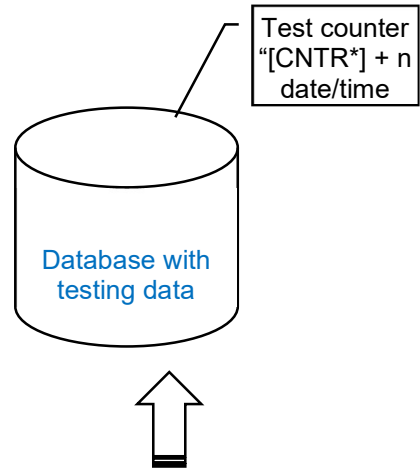
This data is stored into a database on the PC.

The data thus can be stored, accessed and backed-up.

Additional information can be stored for each measurement:

- A sample ID
- Customer
- Small memo field

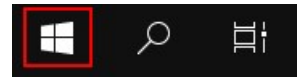
The software offers a menu on which you can search and filter the results. Specific measurements can be directly printed or exported in an electronic format.



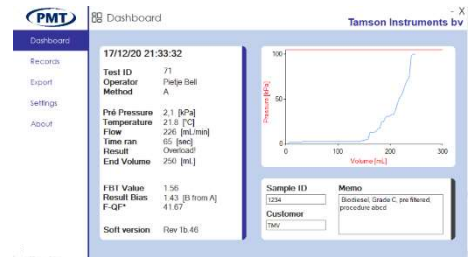
ISO 9001 : 2015  
NL/PRO 238239125

## 7 Start the program

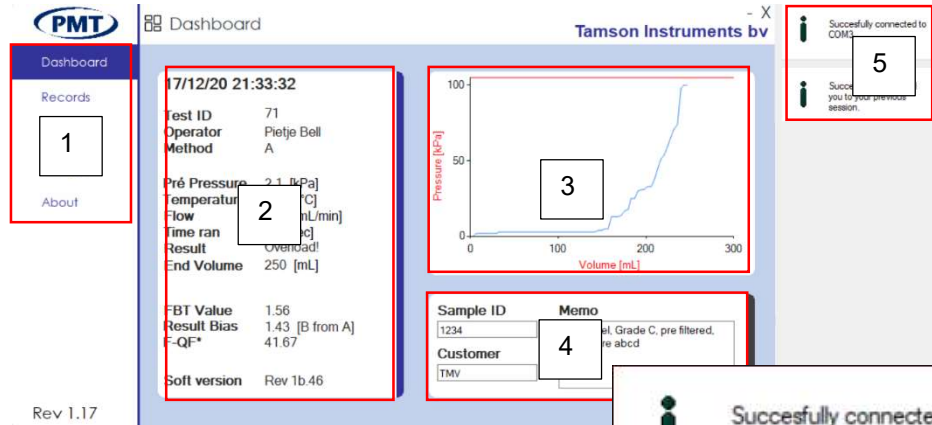
Select the Windows button on the taskbar



Start the program



Item	Description
1	Menu pages
2	Test results
3	Graph result
4	Additional test data
5	Notifications



### 7.1 Restart

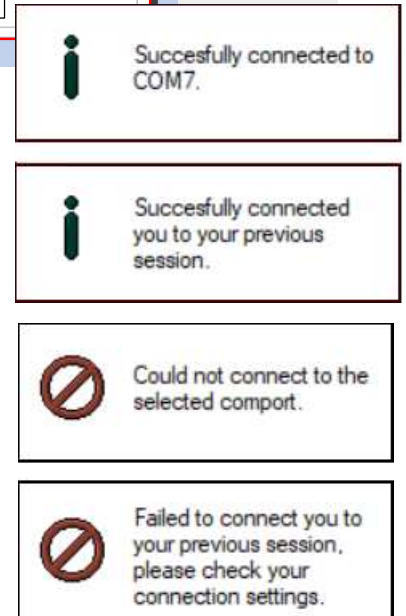
When the apparatus is cabled to the computer, it is automatically connected to the computer.

So, although the TFBT is first off and the PC is switched on, the data will be transported successfully.

The data will be transported to the PC when a test has been performed. The measurement data will be added to the database.

The messages on the right appear right from the program window. The message will be visible for a few seconds.

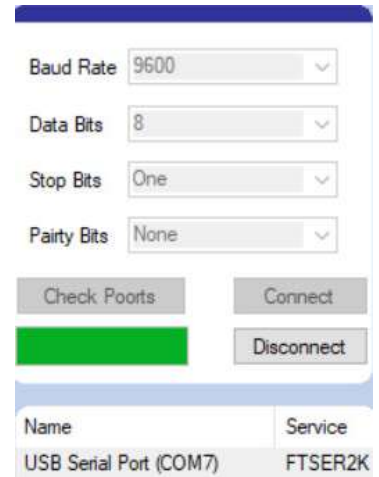
If the USB cable from the TFBT is disconnected, and the program is run a message will show the the software program is unable to connect.



When running the software for a third time no message will appear. The TFBT has to be reconnected from the menu "Settings".

From the "Settings" window it is clear that the TFBT is successfully attached. A green bar shows an active connection.

**The menu "settings" is password protected.**

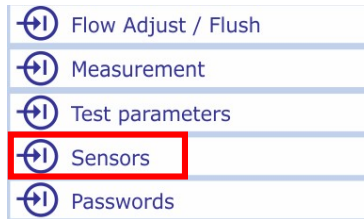


## 7.2 Check communication

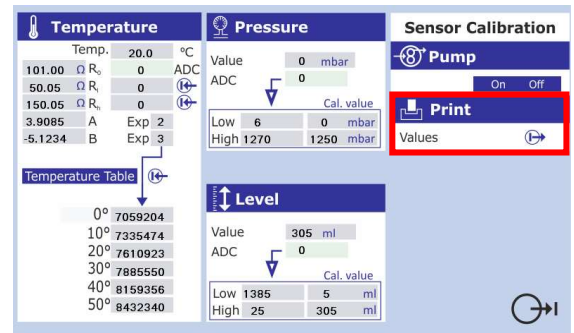
It always is possible to check whether the communication is fully functional.

Make sure the TFBT program is running and connections between TFBT and PC are ok.

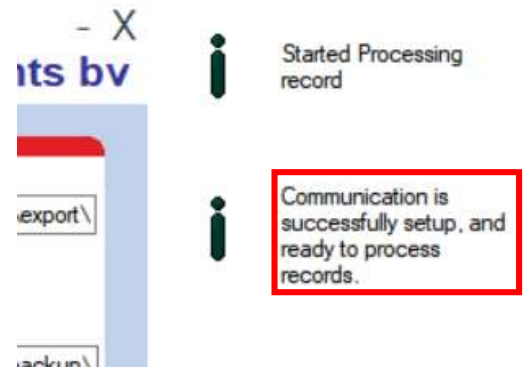
On the TFBT select the menu



In this menu, print its values

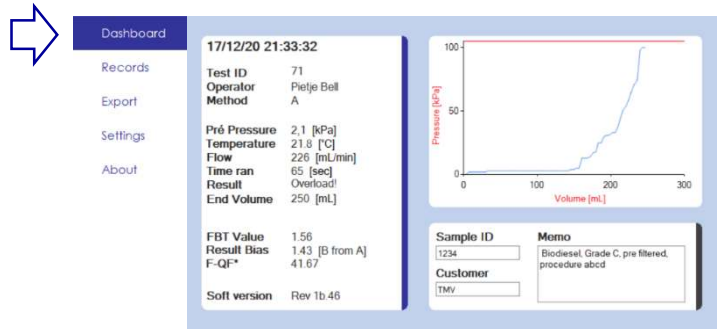


When printing the values on the TFBT, the software detects that communication is fully functional.



## 8 Main functions

Display measurement results



Dashboard

17/12/20 21:33:32

Records

Test ID 71  
Operator Pielje Bell  
Method A

Settings

Pré Pressure 2.1 [kPa]  
Temperature 21.8 [°C]  
Flow 226 [mL/min]  
Time ran 65 [sec]  
Result Overload!  
End Volume 250 [mL]

FBT Value 1.56  
Result Bias 1.43 [B from A]  
F-QF\* 41.67

Soft version Rev 1b.46

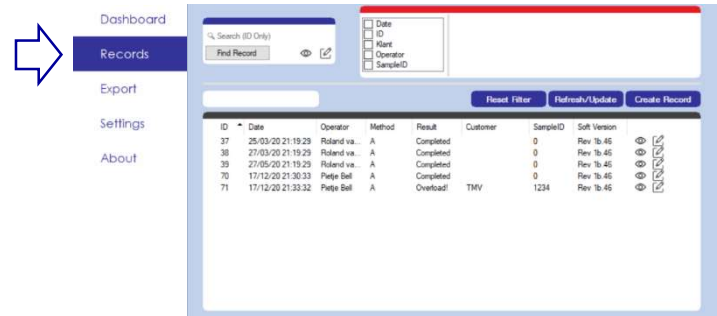
Pressure [kPa]

Volume [mL]

Sample ID 1234  
Memo Biodiesel, Grade C, pre filtered, procedure abcd

Customer TMV

Database overview



Dashboard

Records

Export

Settings

About

Find Record

Reset Filter Refresh/Update Create Record

ID	Date	Operator	Method	Result	Customer	SampleID	Soft Version
37	25/03/20 21:19:29	Roland va...	A	Completed		0	Rev 1b.46
38	27/03/20 21:19:29	Roland va...	A	Completed		0	Rev 1b.46
39	27/05/20 21:19:29	Roland va...	A	Completed		0	Rev 1b.46
70	17/12/20 21:30:33	Pielje Bell	A	Completed		0	Rev 1b.46
71	17/12/20 21:33:32	Pielje Bell	A	Overload!	TMV	1234	Rev 1b.46

Export or print data



Dashboard

Records

Export

Settings

About

Export Type: PDF

Export Selection:

Export Folder: C:\Program Files (x86)\FI Select Folder

Color Options:  Color  Black and White

Orientation:  Vertical  Horizontal

Start Export



est. 1878

Software settings



General info




ISO 9001 : 2015  
NL/PRO 238239125

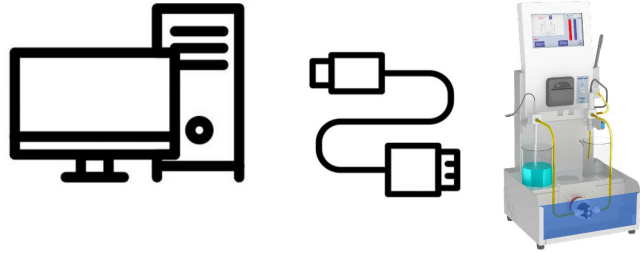
Van 't Hoffstraat 12  
2665 JL Bleiswijk, The Netherlands  
T. 31 (0) 10 522 43 73  
TFBT Database Software 02/21 UK Rev S1.22

# Tamson Instruments bv

E-mail: sales@tamson.com  
Website: www.tamson.com

VAT: NL 80 66 34 984 B01  
Bank account no.:  
NL28 INGB 0007 350 370  
NL95 RABO 0160100046  
Chamber of commerce 27 16 95 41

## 9 Connecting to the TFBT Apparatus



- [1] Open the settings menu
- [2] Enter your or the general password 5662
- [3] Press "Check Ports"

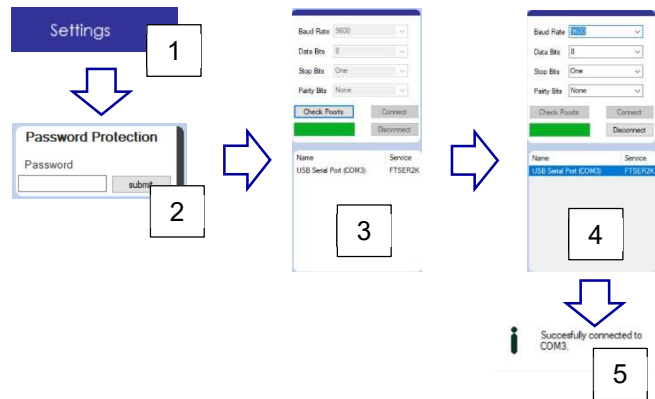
An overview of the ports will be visible in the window below the button [Check Ports]

Select the port  
Here: USB Serial Port (COM3)

- [4] Use the settings 9600, 8, One, None

Press connect

- [5] A message will appear on the right



After closing and restarting the program a successful connection will automatically be made.

**The TFBT must be on before the computer program can reconnect successfully.**

A successful connecting will be messaged after reconnecting.

 Successfully connected to COM3.

.....

 Successfully connected you to your previous session.

## 10 Database

### 10.1 Advanced Search method 1

[1] Select "Records"

[2] Chose your filter:  
 Date  
 ID  
 Customer  
 Operator  
 Sample ID

[3] Set range

[4] Activate selection

[5] Selected records are displayed

[6] Use View, Edit or Delete to modify

ID	Date	Operator	Method	Result	Customer	SampleID	Soft Version
37	25/03/20 21:19:29	Roland va...	A	Completed		0	Rev 1b 46
38	27/03/20 21:19:29	Roland va...	A	Completed		0	Rev 1b 46

**The search is not case sensitive.**

So Client, client or CLIENT will give the same search results



### Edit



All parameters (marked in green) can be edited

27/03/20 21:19:29	
Test ID	38
Operator	Roland van Hall
Method	A
Pré Pressure	19
End Pressure	400
Temperature	23.3
Flow	177
Time	101
Status	Completed
F-QF Value	80.77
FBT Value	1.07
Soft version	Rev 1b.46

Sample ID: 123456  
Customer: T.I. bv  
Memo: Biodiesel, blend, 2nd sample Soak @ 20°

Operator Method: Roland van Hall, A

Pré Pressure: 19  
End Pressure: 400  
Temperature: 23.3  
Flow: 177  
Time: 101  
Status: Completed

F-QF Value: 80.77  
FBT Value: 1.07

Sample ID: 123456  
Customer: T.I. bv  
Memo: Biodiesel, blend, 2nd sample Soak @ 20°

Buttons:

Undo

Store



### View



27/03/20 21:19:29	
Test ID	38
Operator	Roland van Hall
Method	A
Pré Pressure	19 [mBar]
Temperature	23.3 [°C]
Flow	177 [mL/min]
Time ran	101 [sec]
Result	Completed
End Pressure	400 [mBar]
FBT Value	1.07
Result Bias	0.98 [B from A]
F-QF*	80.77
Soft version	Rev 1b.46

Sample ID: 12345689  
Customer: T.I. bv  
Memo: Biodiesel, blend, 2nd sample Soak @ 20°

Buttons:

Undo

Edit

Print

Back

Forward



ISO 9001 : 2015  
NL/PRO 238239125

**Delete a record**



ID	Date	Operator	Method	Result	Customer	SampleID	Soft Version
38	27/03/20 21:19:29	Roland va...	A	Completed	T.I. bv	12345689	Rev 1b.46
39	27/05/20 21:19:29	Roland va...	A	Completed		0	Rev 1b.46



Record will be deleted. **An undo IS NOT POSSIBLE!**

The delete icon only is available when the password has been entered. Select menu "Settings" to enter.

**Password Protection**

Password

submit

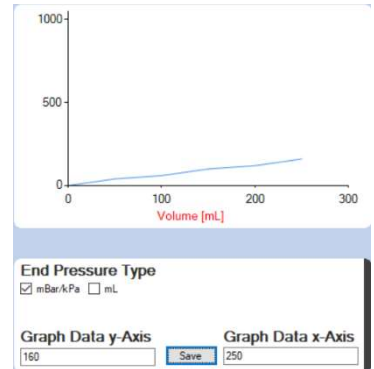
**10.2 Adding a record manually**

Results also can be added manually to the database

The menu "Records" offers this option. To add a record select "create Record" using this button

Create Record

The general data can be entered



A graph can be entered by adding X and Y values

As an example values below were entered

Graph Data y-Axis	Graph Data x-Axis
0	0
50	40
100	60
150	100
200	120
250	160
300	200

End Pressure Type  
 mBar/kPa  mL

Graph Data y-Axis: 160  
 Graph Data x-Axis: 250

Save

09/03/21 23:55:36

Test ID: 113  
 Operator: mr L. Ab  
 Method: A

Pré Pressure: 2  
 End Pressure: 210  
 Temperature: 21.7  
 Flow: 20  
 Time ran: 900  
 Status: Completed

Result Bias: 1,1312  
 F-QF Value:  
 FBT Value: 1,238  
 Soft version: Rev 1.20



ISO 9001 : 2015  
 NL/PRO 238239125

Van 't Hoffstraat 12  
 2665 JL Bleiswijk, The Netherlands  
 T. 31 (0) 10 522 43 73  
 TFBT Database Software 02/21 UK Rev S1.22

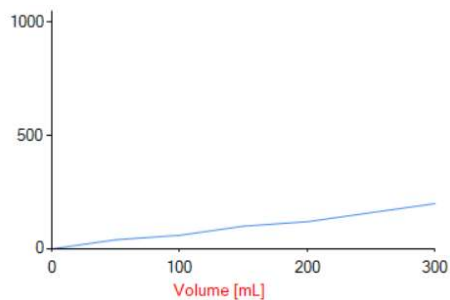
**Tamson Instruments bv**

E-mail: sales@tamson.com  
 Website: www.tamson.com

VAT: NL 80 66 34 984 B01  
 Bank account no.:  
 NL28 INGB 0007 350 370  
 NL95 RABO 0160100046  
 Chamber of commerce 27 16 95 41

Final data

Use the button to save the entered data



### 10.3 Quick Search method

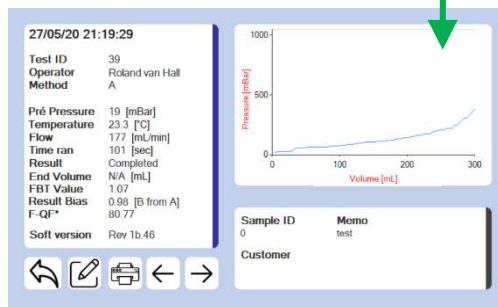
Enter record number to find i.e. 37

Press "Find record"

Use Icons to view or edit

Note

The delete icon only is available when the password has been entered. Select menu "Settings" to enter.



27/05/20 21:19:29	
Test ID	39
Operator	Roland van Hall
Method	A
Pré Pressure	19 [mBar]
Temperature	23.3 [°C]
Flow	177 [mL/min]
Time ran	101 [sec]
Result	Completed
End Volume	N/A [mL]
FBT Value	1.07
Result Bias	0.98 [B from A]
F-QF*	80.77
Soft version	Rev 1b.46

Sample ID	Memo
0	test

Customer



ISO 9001 : 2015  
NL/PRO 238239125

## 11 Export Data

### 11.1 Graphical format

A single or multiple records can be printed or exported

PDF, PNG and JPG are available as graphical export

### 11.2 Numerical output

Comma Separated Value is available for numerical export

Graphical data is not included, only the numerical measurement data. So the data from the graph is not available.

### 11.3 Hardcopy

Each result or record can also directly printed via the printers available from Windows.

The print can be done in color or Black and White.

### 11.4 General export settings

When exporting graphical or hardware color can be used or set to Black and White.

Also orientation can be set

Further the Export Folder is the location at which the data is exported to.

Export Type:

PDF

Export Selection:

39 - 27/05/20 21:19:29

Export Folder:

C:\Program Files (x86)\FI

Color Options:

Color  Black and White

Orientation:

Vertical  Horizontal

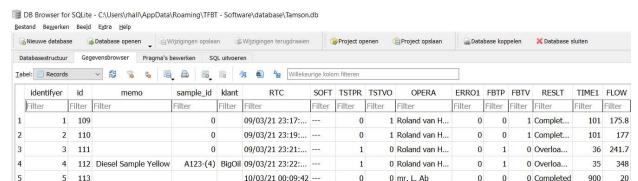
## 12 Opening the database and processing by third party software

The database is in SQL format and therefore readable by general database software like for example the open source program "DB Browser for SQL lite". See the URL for more information:

<https://sqlitebrowser.org>

The program can be used to manipulate both data and records.

When doing so, Tamson is not liable for damage to data or the database. Editing the database with external software is not advised and for the users own risk.



Identifier	id	memo	sample_id	klant	RTC	SOFT	TSTPR	TSTVO	OPERA	ERRO1	FBTP	FBTV	RESULT	TIMEI	FLOW	
1	109		0	09/03/21 23:17:...	---	0	1	Roland van H...	0	0	1	Comple...	101	175.8		
2	110		0	09/03/21 23:19:...	---	0	1	Roland van H...	0	0	1	Comple...	101	177		
3	111		0	09/03/21 23:21:...	---	1	0	Roland van H...	0	1	0	Overflo...	36	241.7		
4	112	Diesel Sample Yellow	A123 (4)	BigOil	09/03/21 23:22:...	---	1	0	Roland van H...	0	1	0	Overflo...	35	348	
5	113				10/03/21 00:09:42	---	0	0	mr. L. Ab	0	0	0	Completed	900	20	

### 13 Settings

The setting menu is available after setting a password

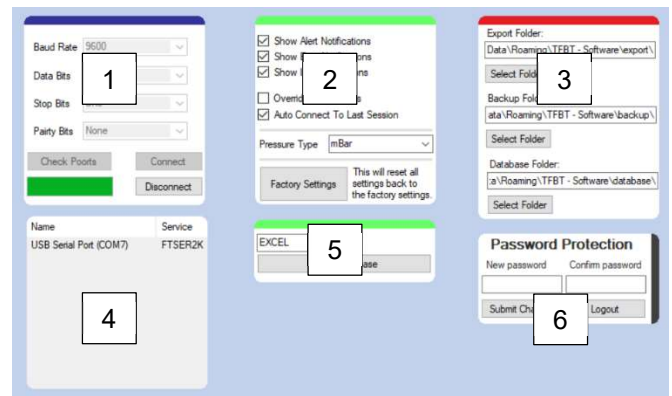
When the password is correct:  
 the menu opens  
 The option to delete records becomes available in the menu "Records". The option is indicated by a "Trashcan" icon



A general password is 5662. This password can be used to always unlock.

Following items are available:

Item	s
1	Communication setting 9600;8;one;1
2	Select errors and notifications . These will be displayed in balloons on the right of the program window
3	Map setting Export folder Backup folder Database folder
4	Overview of serial communication ports available
5	In and export of the database
6	Set a new password



The program itself is installed on the computer in the folder indicated below:

*C:\Program Files (x86)\Tamson Instruments\TFBT - Software*

The location of **database** is situated in sub map from the user who installed it. In this case the user is called rhall

*C:\Users\rhall\AppData\Roaming\TFBT - Software*

In this folder there are three sub folders:

- Export
- Backup
- Data

Hitting the button "factory Settings" resets to the standard mapping. One can adjust the mapping for the data base and export data to ones needs



Reset mapping



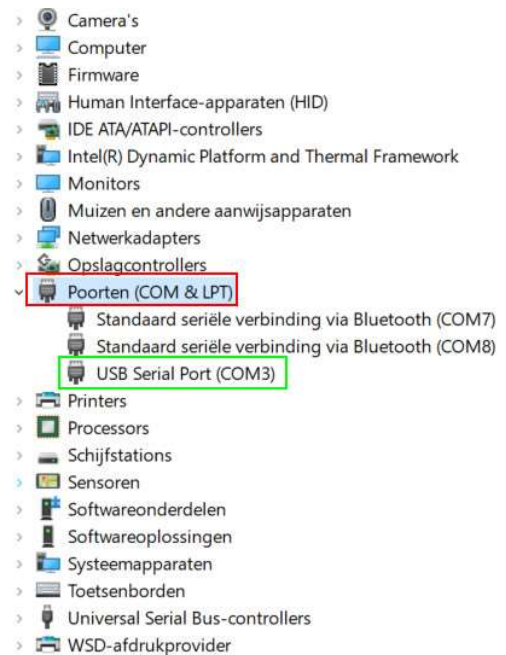
## 14 Troubleshoot

### 14.1 Serial port can't be found

Open the configuration screen or press the "Windows-key" + "R" and enter control  
System

device manager

The port must be listed under "Ports", here "USB Serial Port (COM3)"



### 14.2 Records can't be deleted

Activate menu "Settings" by entering the password.

When the password is correctly entered, the option to delete a data record becomes available and visible by the trashcan icon.

### 14.3 Pressure displayed as kPa and mBar needed or vice versa

Under "Settings" change "Pressure type"

### 14.4 Password forgotten

Use general password "5662" to enter menu "Settings"  
Change the password

### 14.5 Measurement data has disappeared

Check mapping to the database. The filename of the database is Tamson.db. Use explorer for this database and set the path under the menu "Settings"

The database is installed under the user and  
C:\Users\rhall\AppData\Roaming\TFBT - Software



ISO 9001 : 2015  
NL/PRO 238239125

**Tamson Instruments bv**

VAT: NL 80 66 34 984 B01

Bank account no.:

NL28 INGB 0007 350 370

NL95 RABO 0160100046

Chamber of commerce 27 16 95 41

Van 't Hoffstraat 12

2665 JL Bleiswijk, The Netherlands

T. 31 (0) 10 522 43 73

TFBT Database Software 02/21 UK Rev S1.22

E-mail: sales@tamson.com

Website: www.tamson.com



est. 1878

15 Output format

4 x Examples of RS232 output			
Run overpressure first 20 sec	FBT test ended whilst pressure exceeds 1050 mBar	FBT test sample volume fully pumped	Output Calibration values via "Sensors" menu
[CNTR*]1	[CNTR*]2	[CNTR*]3	[CALDT]
[RTC**]24/01/19 23:50:20	[RTC**]24/01/19 23:51:54	[RTC**]24/01/19 23:54:15	[CNTR*]4
[SOFT*]Rev 1b43	[SOFT*]Rev 1b43	[SOFT*]Rev 1b43	[RTC**]25/01/19 09:17:47
[TSTPR]	[TSTPR]	[TSTVO]	[SOFT*]Rev 1b.43
[OPERA]Guest	[OPERA]Guest	[OPERA]Guest	[RO***]100.00
[ERRO1]	[FBT-P]	[FBT-V]	[R1***]49.81
[AO5]0	[AO5]28	[AO5]10	[RH***]199.46
[AO10]0	[AO10]28	[AO10]10	[AFACT]3.9080
[AO15]0	[AO15]28	[AO15]10	[BFACT]-5.8020
[AO20]0	[AO20]28	[AO20]10	[TTOC*]7138462
[AO25]0	[AO25]28	[AO25]29	[TT10C]7416994
[AO30]0	[AO30]75	[AO30]29	[TT20C]7694698
[AO35]0	[AO35]75	[AO35]29	[TT30C]7971574
[AO40]0	[AO40]75	[AO40]29	[TT40C]8247622
[AO45]0	[AO45]75	[AO45]35	[TT50C]8522841
[AO50]0	[AO50]80	[AO50]35	[PCALL]0
[AO55]0	[AO55]80	[AO55]42	[PADCL]7
[AO60]0	[AO60]80	[AO60]42	[PCALH]1100
[AO65]0	[AO65]86	[AO65]51	[PADCH]2040
[AO70]0	[AO70]86	[AO70]51	[PRND*]50
[AO75]0	[AO75]92	[AO75]51	[LCALL]0
[AO80]0	[AO80]92	[AO80]51	[LADCL]1020
[AO85]0	[AO85]92	[AO85]51	[LCALH]300
[AO90]0	[AO90]92	[AO90]51	[LADCH]120
[AO95]0	[AO95]92	[AO95]51	[VRND*]10
[AO100]0	[AO100]92	[AO100]63	[PSPD*]588
[AO105]0	[AO105]92	[AO105]63	[GD-G*]Line
[AO110]0	[AO110]104	[AO110]63	[MET**]B
[AO115]0	[AO115]104	[AO115]63	[PDIM*]mBar
[AO120]0	[AO120]104	[AO120]63	[D6426]Show result
[AO125]0	[AO125]104	[AO125]63	[BATOB]0.9133
[AO130]0	[AO130]126	[AO130]63	[BBTOA]1.0970
[AO135]0	[AO135]132	[AO135]63	[PLLO*]70
[AO140]0	[AO140]1066	[AO140]63	[PLHI*]400
[AO145]0	[AO145]0	[AO145]73	[PMA*]1050
[AO150]0	[AO150]0	[AO150]98	[PTIM*]20
[AO155]0	[AO155]0	[AO155]98	[TTOT*]101
[AO160]0	[AO160]0	[AO160]110	
[AO165]0	[AO165]0	[AO165]110	
For functional reasons values [AO170] to [AO385] are not displayed			
[AO390]0	[AO390]0	[AO390]506	
[AO395]0	[AO395]0	[AO395]508	
[AO400]0	[AO400]0	[AO400]512	
[AO405]0	[AO405]0	[AO405]0	
[AO410]0	[AO410]0	[AO410]0	
[AO415]0	[AO415]0	[AO415]0	
[AO420]0	[AO420]0	[AO420]0	
[RESLT]Overload!	[RESLT]Overload!	[RESLT]Completed	
[TEMP*]22.8	[TIME1]46	[TIME1]101	
[TIME2]20	[FLOW*]138.3	[TIME2]20	
[PFBT]---	[TEMP*]22.6	[FLOW*]175.8	
[MLFBT]10	[TIME2]20	[TEMP*]22.5	
[MET**]A	[PFBT]70	[PFBT*]26	
	[MLFBT]110	[PEXIT]550	
	[MET**]A	[MLFBT]300	
	[REFBT]290	[MET**]A	
	[BIFBT]265	[REFBT]113	
	[F-QF*]18.33	[BIFBT]103	
		[F-QF]73.56	



ISO 9001 : 2015  
NL/PRO 238239125

**Tamson Instruments bv**

VAT: NL 80 66 34 984 B01

Bank account no.:

NL28 INGB 0007 350 370

NL95 RABO 0160100046

Chamber of commerce 27 16 95 41

Van 't Hoffstraat 12  
2665 JL Bleiswijk, The Netherlands  
T. 31 (0) 10 522 43 73

E-mail: sales@tamson.com  
Website: www.tamson.com

TFBT Database Software 02/21 UK Rev S1.22



est. 1878

## 16 DISCLAIMER

Information given herein is offered in good faith as accurate, but without guarantee. Conditions of use and suitability of the product for particular uses are beyond our control; all risks of use of the product are therefore assumed by the user.

**We expressly disclaim all warranties of every kind and nature, including warranties of merchantability and fitness for a particular purpose in respect to the use or suitability of the product.**

Nothing is intended as a recommendation for uses which infringe valid patents or as extending license under valid patents. Appropriate warnings and safe handling procedures should be provided to handlers and users. Alteration of this document is strictly prohibited. Except to the extent required by law, republication or retransmission of this document, in whole or in part, is not permitted. Tamson Instruments bv assume no responsibility for accuracy of information. Tamson Instruments neither represent nor warrant that the format, content or product formulas contained in this document comply with the laws of any other country except the Netherlands.

Tamson Instruments bv, All rights reserved.



ISO 9001 : 2015  
NL/PRO 238239125

Van 't Hoffstraat 12  
2665 JL Bleiswijk, The Netherlands  
T. 31 (0) 10 522 43 73  
TFBT Database Software 02/21 UK Rev S1.22

**Tamson Instruments bv**

E-mail: [sales@tamson.com](mailto:sales@tamson.com)  
Website: [www.tamson.com](http://www.tamson.com)

VAT: NL 80 66 34 984 B01  
Bank account no.:  
NL28 INGB 0007 350 370  
NL95 RABO 0160100046  
Chamber of commerce 27 16 95 41

Page 24/24